

NORRKÖPING/Kungsängen

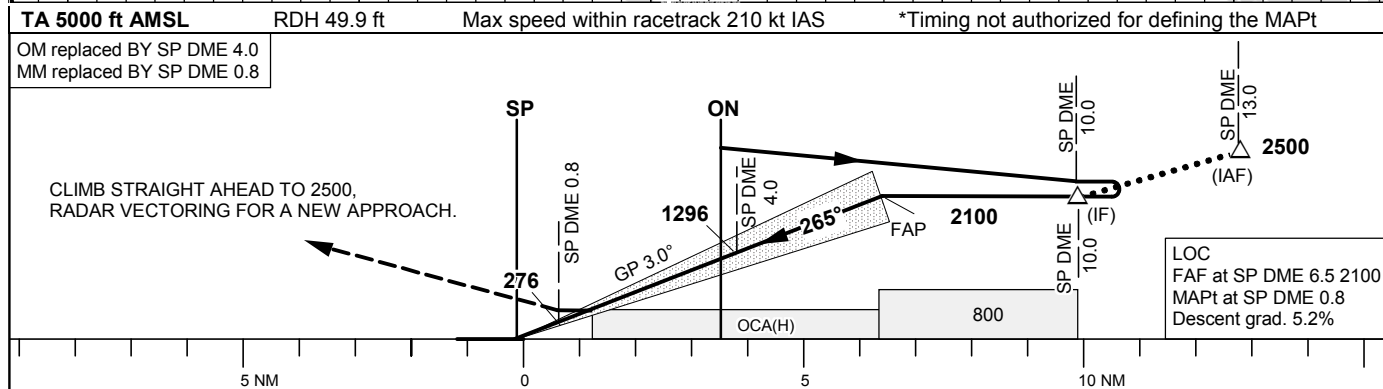
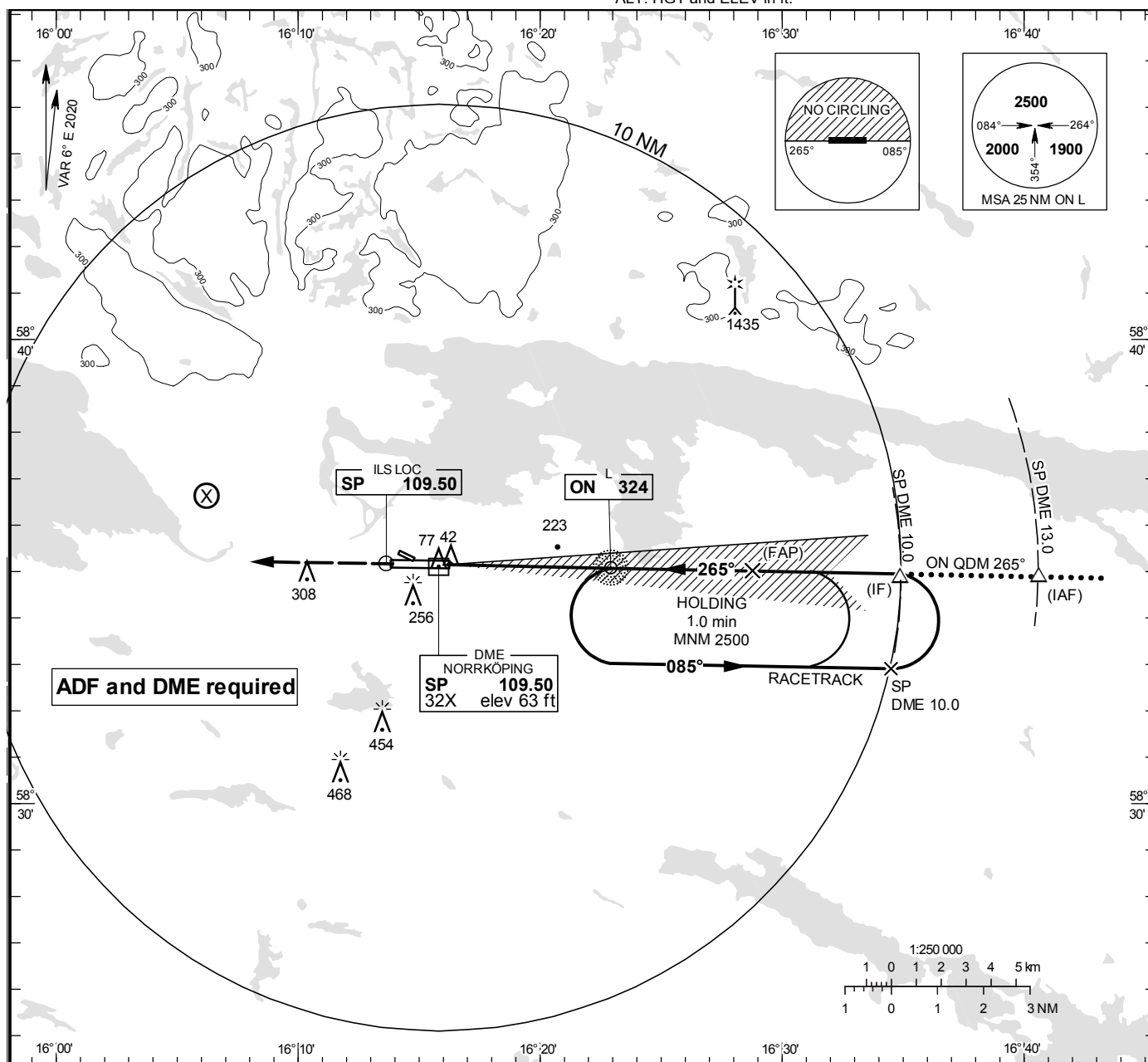
ILS y or LOC y RWY 27

KUNGSÄNGEN TOWER 120.355
ÖSTGÖTA APPROACH 132.955

THR ELEV 32.3 ft, AD ELEV 32 ft

OCH are related to THR.
Circling OCH are related to AD ELEV.
BRG are MAG
ALT, HGT and ELEV in ft.

INSTRUMENT
APPROACH
CHART – ICAO



OCA (H)					Final approach					
					LOC Distance FAF-MAPt 5.7 NM*					
Cat of ACFT	A	B	C	D	DME SP NM	2	3	4	5	6
Straight-in	181 (148)	189 (156)	199 (166)	210 (177)	ALT	660	980	1300	1620	1940
Approach	470 (440)				GS	kt	80	100	120	140
Circling S RWY	560 (530)	620 (590)	860 (830)	880 (850)	Time	min:s	4:18	3:26	2:52	2:27
					Rate of descent	ft/min	425	530	635	745

CHANGE: Editorial